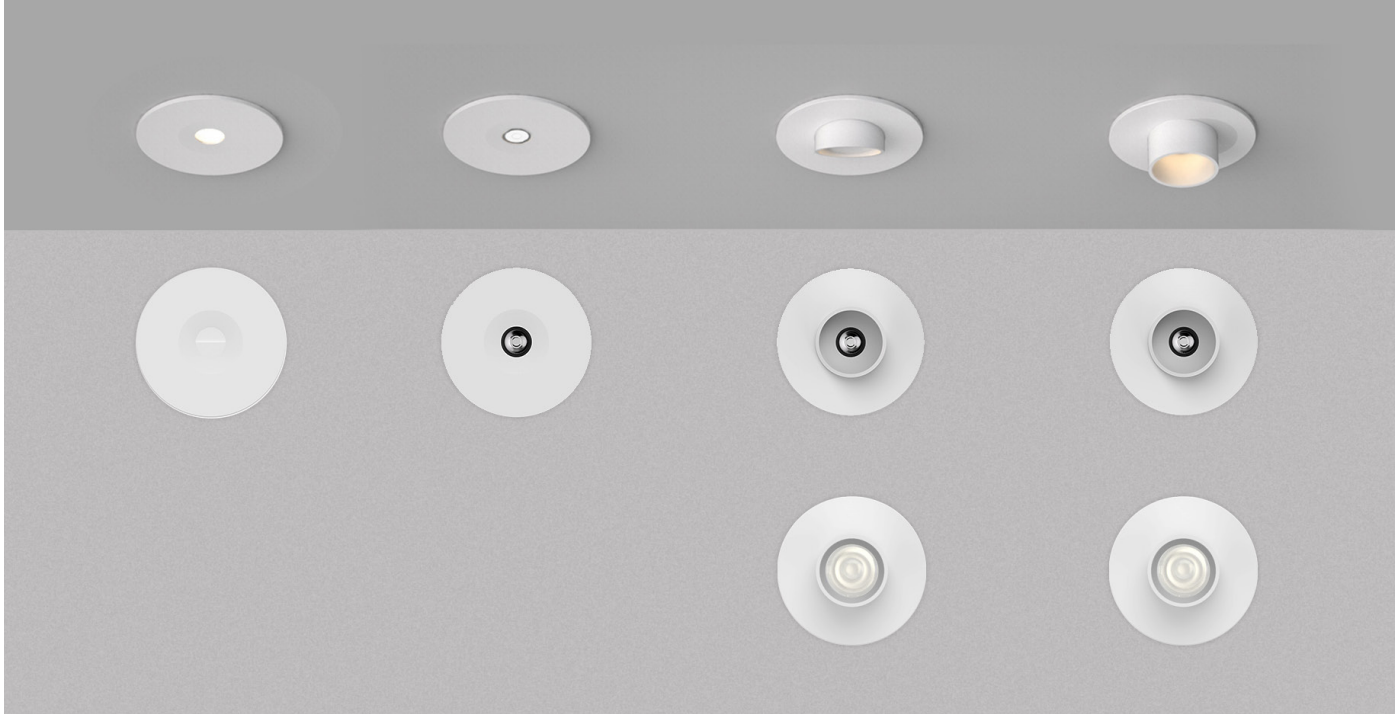


LD70, LD70-OP & LD70D

Ultra Shallow Recessed Shelf Light



Data sheet - Page 1



The LD70, LD70-OP and the LD70D range of light fittings is a series of extremely shallow recessed LED downlights. They feature minimal bezel thicknesses and are available with an optional half or fully cowlled bezel to give optimal glare control, making them ideal for ultra discreet lighting in display cabinets or under shelving.

The LD70D is available with our standard narrow beam optic at a recess depth of 17mm, which allows for continuity with other LightGraphix products. Alternatively, where there is a requirement for an even shallower recess depth, the LD70 uses our new range of miniature optics and requires a recess depth of only 13mm. LD70-OP has an opal diffuser and no optic, creating a very wide, diffused spread of light.

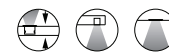
Both LD70 + LD70D are available with half cowl (HC) & full cowl (FC) options.

Key Features

- Very minimal product depth, only 13mm void needed (17mm required if LD70D is specified)
- Ideal for shelf or under cabinet lighting
- Spring clips designed for solid cabinets / shelving
- Polarity protection on chip
- Can be mounted directly into surface without the need for a thermal void
- Optional half & full cowlled bezels available for further glare control
- Interchangeable bezels
- Wide range of beam angles & optics suitable for all projects
- Minimal bezel thickness
- 93 CRI LED in warm white.
- Available with switched, 0-10V, DMX, DALI or Mains dimmable drivers

Specification

Applications



Beam Angles*

NB, MB, WB, SWB

LED type

Cree XPG2

Colour temperature

2700K*** / 3000K | 5000K

Drive Current (mA)

350

500

700

350

500

700

LED power** (W)

1.2W

1.7W

2.4W

1.2W

1.7W

2.4W

CRI (typical)

93

93

93

75

75

75

Forward voltage (V)₁₀₀

3.0V

3.2V

3.4V

3.0V

3.2V

3.4V

LD70-OP Delivered lumens(L₁₀₀)

42

51

64

51

62

78

Lumens per circuit watt

35

30

27

42

36

32

LD70 Delivered lumens(L₁₀₀)

93

114

150

113

139

182

Lumens per circuit watt

77

67

62

94

81

75

LD70D Delivered lumens(L₁₀₀)

128

151

200

130

182

242

Lumens per circuit watt

89

88

83

108

107

100

LED lifetime (to 70% lumen maintenance)

50,000hrs at a max ambient temperature of 35°C (if specifying fitting in ambient temperatures of up to 45°C run at 500mA max)

Materials

Aluminium body and bezel

Wiring

Comes pre-wired with flat 2-core 100mm lead, can be specified with up to 10m at extra cost

IP rating

IP20

* NB available only in LD70D, SWB available only in LD70-OP

**LED wattage includes losses associated with using an 85% efficient driver

***2700K lumen output is 12% lower than the 3000K figure listed

4000K lumen output is 14% higher than the 3000K figure listed (80 CRI)


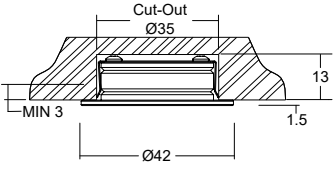

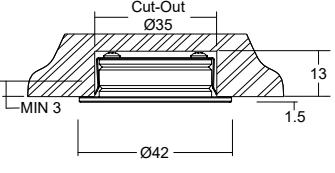

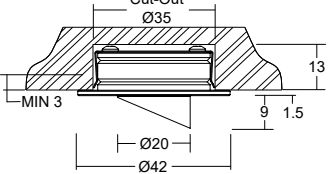

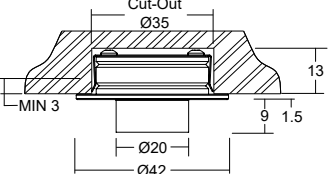

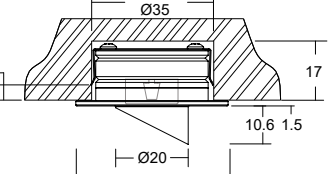

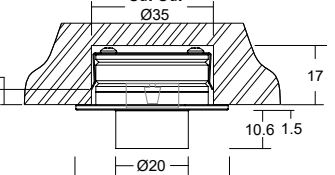
LD70, LD70-OP & LD70D



Ultra Shallow Recessed Shelf Light

Data sheet - Page 2

Comparison Guide

	Product Diagram	Void Recess Depth	Beam Angle	Drive Current	Narrow Beam Available
Opal Diffusion					
 LD70-OP		13mm	120°	350mA, 500mA, 700mA	N
Lisa Micro Optics					
 LD70		13mm	31°, 55°	350mA, 500mA, 700mA	N
 LD70-HC		13mm	31°, 55°	350mA, 500mA, 700mA	N
 LD70-FC		13mm	31°, 55°	350mA, 500mA, 700mA	N
Tina Mini Optics - Used in LD51 / LD56 / LD71					
 LD70D-HC		17mm	12°, 31°, 48°	350mA, 500mA, 700mA	Y
 LD70D-FC		17mm	12°, 31°, 48°	350mA, 500mA, 700mA	Y

*The Tina optic is the standard optic for all LightGraphix products that use the Cree XPG2 LED. It is recommended to use the LD70D if it is part of a project using a range of Lightgraphix products.

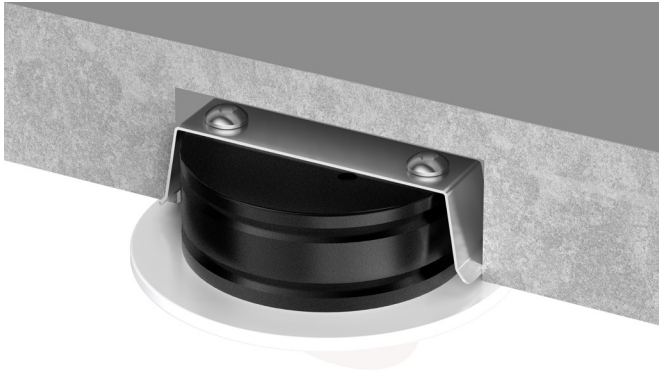
LD70, LD70-OP & LD70D

Ultra Shallow Recessed Shelf Light



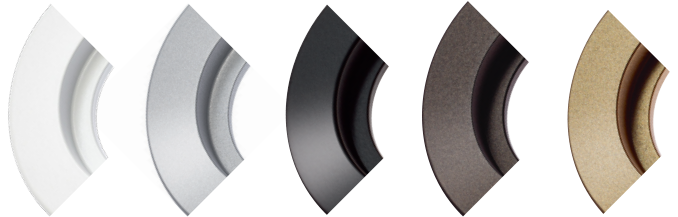
Data sheet - Page 3

Shallow Recessed Void

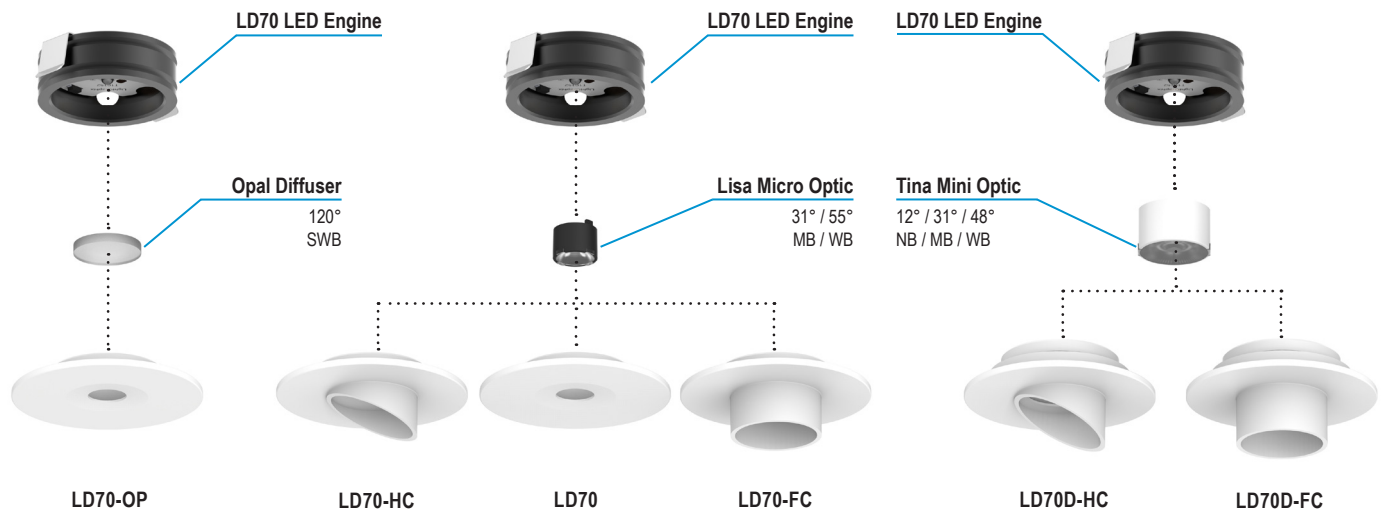


Finish Options

High quality machined bezel available in paint finish white (RAL 9016) / silver / black / RAL / antique bronze / satin antique brass. Other paint finishes available. Contact our sales team for further details.



Product Family



LD70-HC

LD70, LD70-OP & LD70D

Ultra Shallow Recessed Shelf Light

Data sheet - Page 4



LD70



Product code LED colour Lens angle Bezel finish

LD70 - 350
- 500
- 700

Example: LD70-350 / LW30 / MB / RAL 9001

Product codes with output options

350mA	LD70-350	500mA	LD70-500	700mA	LD70-700
1.2W	LD70HC-350	1.7W	LD70HC-500	2.4W	LD70HC-700
	LD70FC-350		LD70FC-500		LD70FC-700

LED colour options

Extra Warm White (2700K)	/LW27
Warm White (3000K)	/LW30
White (4000K)	/LW40
Cool White (5000K)	/LW50

Beam / lens angle options

30° Medium	/MB
55° Wide	/WB

Finish options

Bezel - paint finish white (RAL 9016) / silver / black / RAL / antique bronze / antique brass

See our finishes guide for more detailed information on available finishes

Driver requirements - See LD70-OP table for driver information

LD70-OP



Product code LED colour Bezel finish

LD70-OP - 350
- 500
- 700

Example: LD70-OP-350 / LW30 / RAL 9001

Product codes with output options

350mA	LD70-OP-350	500mA	LD70-OP-500	700mA	LD70-OP-700
1.2W		1.7W		2.4W	

LED colour options

Extra Warm White (2700K)	/LW27
Warm White (3000K)	/LW30
White (4000K)	/LW40
Cool White (5000K)	/LW50

Finish options

Bezel - paint finish white (RAL 9016) / silver / black / RAL / antique bronze / antique brass

See our finishes guide for more detailed information on available finishes

Use with 350mA, 500mA and 700mA constant current LED drivers

We have a wide range of dimmable LED drivers, 0-10V, DMX, DALI and Mains dimmable. Please see the downloads section on our website:

To run 1-14 LD70**-350 in series use a TXDEL350D (0-10V dimmable)

To run 1-14 LD70**-500 in series use a TXDEL500D (0-10V dimmable)

To run 1-13 LD70**-700 in series use a TXDEL700D (0-10V dimmable)

LD70D



Product code LED colour Lens angle Bezel finish

LD70D - 350
- 500
- 700

Example: LD70D-350 / LW30 / MB / RAL 9001

Product codes with output options

350mA	LD70D-HC-350	500mA	LD70D-HC-500	700mA	LD70D-HC-700
1.2W	LD70D-FC-350	1.7W	LD70D-FC-500	2.4W	LD70D-FC-700

LED colour options

Extra Warm White (2700K)	/LW27
Warm White (3000K)	/LW30
White (4000K)	/LW40
Cool White (5000K)	/LW50

Beam / lens angle options

12° Narrow Spot	/NB
31° Medium	/MB
48° Wide	/WB

Finish options

Bezel - paint finish white (RAL 9016) / silver / black / RAL / antique bronze / antique brass

See our finishes guide for more detailed information on available finishes

Driver requirements - See LD70-OP table for driver information